



ATMD-GPX

TDC-GPX Evaluation System



Datasheet

18TH MAY 2005



acam - solutions in time

Precision Time Interval Measurement



acam
mess • electronic

Index

Index.....	3
Limited Warranty.....	4
1. Introduction	5
1.1 System overview	5
Features ATMD.....	5
Features AM-GPX	5
1.2 Hard- and Software Installation	6
2. Writing Software	7
2.1 ATMD Registers.....	7
2.1.1 Register Addresses.....	7
2.1.2 Register Structure	7
2.1.3 Registers in Detail	8
2.2 Direct Read Mode	9
2.3 Burst Mode.....	12
3 ATMD_GPX Measurement Software	13
3.1 Measurement Software	13
4 AM-GPX module	18
4.1 AM-GPX Schematics.....	18
4.2 AM-GPX Board Layout	21
4.2 Input section	25
Contact	26

Limited Warranty

The ATMD measurement system with its components ATMD-MB, ATMD-PC, ATMD-PCI and AM-GPX is designed and offered as an evaluation system for the integrated circuit TDC-GPX, offered by acam-messelectronic. The hardware are warranted against defects in materials and workmanship for a period of 12 months from the date of shipment, as evidenced by receipts or other documentation. acam-messelectronic will, at its option, repair or replace equipment that proves to be defective during the warranty period.

The information provided herein is believed to be reliable. However, acam-messelectronic assumes no responsibilities for inaccuracies or omissions. acam-messelectronic assumes no responsibility for the use of this information, and all use of this information shall be entirely to the user's own risk. No patent rights or licenses to any of the circuits described herein are implied or granted to any third party. acam-messelectronic does not authorise or warrant any acam-messelectronic product for use in life support devices and/or systems.

Except as specified herein, acam-messelectronic makes no warranties, express or implied, and specifically disclaims any warranty of merchantability or fitness for a particular purpose. Customer's right to recover damages caused by fault or negligence on the part of acam-messelectronic shall be limited to the amount theretofore paid by the customer. acam-messelectronic will not be liable for damages resulting from loss of data, profits, use of products, or identical or consequential damages, even if advised of the possibility thereof. This limitation of the liability of acam-messelectronic will apply regardless of the form of action. Any action against acam-messelectronic must be brought within one year after the cause of action accrues. acam-messelectronic shall not be liable for any delay in performance due to causes beyond its reasonable control. The warranty provided herein does not cover damages, defects, malfunctions, or service failure caused by the owner's failure to follow acam-messelectronic's installation and operation instructions. Further the warranty does not cover damages due to owner's modification of the product, owner's abuse, misuse, or negligent acts and power failure or surges or other events outside reasonable control.



The products ATMD with its components comply with EMC directive 89/336/EEC, applied standard DIN EN 61326, Equipment for Control and Laboratory (For use in electromagnetically controlled environment). Generic immunity standard part 2 (EN 61000-4-4: 0,5KV, -4-6: 1V), In case of strong electromagnetic disturbances there might be a deviation of the output signal from the specification, but only for the duration of the disturbance.

1. Introduction

1.1 System overview

The ATMD-GPX evaluation system consists of a motherboard together with the AM-GPX plug-in module, mounted in a metal case. It is connected to the ATMD-PCI interface card (mounted in the PC) by a SCSI-type cable (although the bus is ATMD specific and not a PCI type).



Ordering numbers:

ATMD-GPX	MNR 881	Motherboard with 1 AM-GPX plug-in module incl. Software, manuals and cables
ATMD-PCI	MNR 478	PCI interface

Features ATMD

- Two operating modes
 - Direct Read
 - Burst Mode
- FIFO on motherboard 1K (can be increased to 32K)
- Supply through PCI interface
- Op. temperature range $-25^{\circ}\text{C} \dots +70^{\circ}\text{C}$
- Maximum data rate PCI interface about 1 MHz, depending on software.

Features AM-GPX


Three operating modes

- I-Mode
 - 8 channels with 81 ps resolution
 - 5.6 ns pulse-pair resolution with 32-fold multihit capability
 - LVTTTL inputs
- G-Mode
 - 2 channels with 40 ps resolution
 - Measuring falling and rising edge, minimum pulsewidth 1.8ns
 - 5.6 ns pulse-pair resolution with 32-fold multihit capability
 - Differential LVPECL inputs, LVTTTL inputs for testing
 - Optional quiete mode
- R-Mode
 - 2 channels with 27 ps resolution
 - Measuring falling or rising edge
 - 5.6 ns pulse-pair resolution with 32-fold multihit capability
 - Differential LVPECL inputs, LVTTTL inputs for testing
 - Optional quiete mode
- M-Mode
 - 2 channels with 10 ps resolution
 - Measuring falling or rising edge
 - single stop pulse
 - Differential LVPECL inputs, LVTTTL inputs for testing
 - Quiete mode

1.2 Hard- and Software Installation


Important! All components of the ATMD-System are sensitive to static electricity. Before installing the interface board, please touch a grounded object such as a metal screw on the computer. Handle the interface board by its edges and be careful not to twist it.


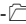
Perform the following steps to install the interface board:

1.  ni-visa
-----Nivisa.msi run NI Visa instrument drivers installer
2. lvruntimeeng.msi run NI LabView runtime installer for Windows 98
or
visa320runtime.exe run NI LabView runtime installer for Windows NT/2000/XP

3. Turn off your computer. Keep your computer plugged in so that it remains grounded while you install your interface board. Remove the computers cover. Next , align the interfaces edge connector with an 32-bit PCI expansion slot for ATMD-PCI. Then, push the board down into the slot until the board locks into place. It might be a tight fit, but do not force the board into place. Screw the mounting bracket of the interface board to the back panel rail of the computer, check the installation and replace the cover of the computer.



4. Connect the interface board and the external ATMD motherboard via the enclosed cable (for convenience a standard SCSI-2 cable is used, but it is not a SCSI interface!) and turn on your computer.

5. The operating system will ask for a driver. Select from
 AcamAtmdPCI Inf-Files for registration of PCI-interface under NT/2000/XP
-----ATMD_PCI_9X.inf for Windows '98
----- ATMD_PCI_NT5.inf for Windows NT, 2000, XP



6.  ATMD_GPX_4_0
----- Installer
-----setup.exe run installer for ATMD-GPX software

7. To start the ATMD-GPX software select START/Programs/ATMD_GPX_4_0/ ATMD_GPX_4_0.

If you want to write your own C++ based software install the following files for a free access to the I/O ports:

-  Driver
-----instdrv.exe copies giveio.sys and windrvr.sys into the System32\drivers folder
When working with Windows NT/2000/XP first install the necessary drivers executing instdrv.cmd. Open the device manager, select menu item 'Show hidden devices' and select folder 'Non-PNP devices'. There you will find the giveio.sys and windrvr.sys. Select under properties the start option 'automatic'.
-  PCI
-----atmd_pci.dll copy this file into system folder
-----atmd_pci.lib "

Furhter files on the CD-ROM are:

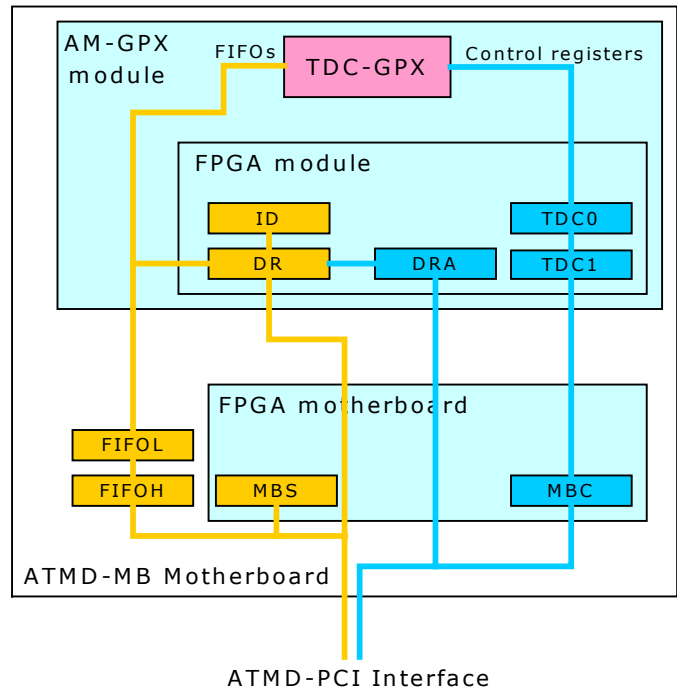
-  Samples
-----G-Direct-TTL etc. Visual C++ samples
-  Doc all available documents in PDF-format

2. Writing Software

2.1 ATMD Registers

For the communication between PC and TDC-GPX there are several registers on the motherboard FPGA and the AM-GPX module's FPGA.

To setup the TDC-GPX control registers write into registers TDC0 and TDC1. There are two possible ways to read out data from the TDC-GPX: a) Direct read by registers DRA and DR. The TDC must be reinitialized after by sending a partial or master reset. b) Burst mode: the module FPGA controls the measurement. It makes the TDC write the data into the motherboard FIFO and reinitializes the TDC automatically. The user reads the data from the motherboard FIFOs.



2.1.1 Register Addresses

Address Off-set	Read	Write
0x0	DR Direct Read	TDC0 GPX data
0x2	n.a.	TDC1 GPX data + Adr
0x4	ID Module Identification	DRA Direct Read Address
0x6	n.a.	n.a.
0x8	MBS Motherboard Status	n.a.
0xA	FIFOL FIFO LSW	n.a.
0xC	FIFOH FIFO MSW	MBC Motherboard Control

2.1.2 Register Structure

Write Registers

Name	D15	D14	D13	D12	D11	D10	D9	D8	D7	D6	D5	D4	D3	D2	D1	D0
TDC0	D15	D14	D13	D12	D11	D10	D9	D8	D7	D6	D5	D4	D3	D2	D1	D0
TDC1	A3	A2	A1	A0	D27	D26	D25	D24	D23	D22	D21	D20	D19	D18	D17	D16
DRA	-	-	-	-	-	-	-	-	-	-	-	-	A3	A2	A1	A0
MBC	-	-	-	-	-	-	BMH	RS	-	-	-	Trig	Dis	St01	BML	RS

Read Registers

Name	D15	D14	D13	D12	D11	D10	D9	D8	D7	D6	D5	D4	D3	D2	D1	D0
MBS	1	1	1	TEF2	TEF1	BMH	FFH	EFH	-	-	TINT	-	-	BML	FFL	EFL
ID	C2	C1	C0	0	0	0	0	0	0	0	0	0	0	0	0	0
FIFOL	D15	D14	D13	D12	D11	D10	D9	D8	D7	D6	D5	D4	D3	D2	D1	D0
FIFOH	St01	IF#	-	-	D27	D26	D25	D24	D23	D22	D21	D20	D19	D18	D17	D16

2.1.3 Registers in Detail

All register bits are active high except the FIFO flags FFH, EFH, FFL and EFL!

TDCO	D0 to D15	Data to be written into TDC-GPX control registers, bits D0 to 15
TDCO	D16 to D27 A0 to A3	Data to be written into TDC-GPX control registers, bits D16 to 27 Address of TDC-GPX control register
DRA	A0 to A0	Address of TDC-GPX read register
MBC		Motherboard Control register (write)
	BMH,L	0x0202 = Burst Mode on
	RS	0x0101 = Module Reset
	St01	1 = output of actual Start01 value, indicated by highest Bit of FIFOH = "0"
	Dis	1 = hardware disable of all inputs (sets StartDis and StopDisx pins of TDC-GPX
	Trig	1 = crate pulse at pin 4 of connector 11, can be used to trigger external pulse generator
MBS		Motherboard Status register (read)
	EFH,L	Motherboard FIFO Empty (High Word, Low Word) low active
	FFH,L	Motherboard FIFO Full (High Word, Low Word) low active
	BMH,L	Burst Mode (High Word, Low Word)
	TEF1,2	Empty flags of TDC-GPX interface FIFOs
	Tint	TDC-GPX interrupt flag
ID		
	C[2:0]	Module code, AM-GPX = '100' (ID = 0x8000), to be used for automatic module detection.
FIFOL, FIFOH		
	Output Data Format	
	D0 to D27	represent the TDC-GPX output data. The format depends on the measurement mode. For details see the TDC-GPX manual.
	IF#	indicates from which TDC-GPX interface FIFO the are. "0" = IFIFO0, "1" = IFIFO1
	St01	"1" = time measurement data, "0" = Start01 value (I-Mode)

If one of the FIFOs rises it's full flag, the AM-GPX Module stops writing to them. Therefore FIFOL and FIFOH must always be read together to avoid an unbalanced number of values in the FIFOs.

If FIFOL and FIFOH are not read together it can lead to:

- Uncorrelated data: channel number and time value do not belong to each other!
- Loss of data: the full FIFO disables also writing data to the other FIFO

2.2 Direct Read Mode

In this mode the software communicates directly with the TDC-GPX. The user reads the output data directly from the TDC-GPX interface FIFO's.

The following example for G-Mode shows how to write software for the ATMD-GPX:

1. Get base address of the ATMD-PCI interface card

```
#include "atmd_pci.h"

// detect ATMD PCI (call GetATMDPCIBoardCount()
// to detect number of ATMD-PCI boards)

iBoardCount = GetATMDPCIBoardCount();
printf("No. of ATMD PCI boards found = %d\n",iBoardCount);

i=0;
while((!AtmdOK) || (i>4))
{
    AtmdOK = GetATMDPCIBaseAddr(i,dwTemp);
    atmd_pci_base_address[i] = (WORD) dwTemp;
    i++;
}
if (AtmdOK)
{
    printf("ATMD PCI Board found on 0x%x\n",atmd_pci_base_address[i-1]);
    base = atmd_pci_base_address[i-1];          // base = base address
    if(!EnablePortAccess())
    {
        AfxMessageBox("Giveio.sys couldn't be opened");
    }
}
else
{
    AfxMessageBox("ATMD-PCI interface not found");
}
}
```

2. Board reset

```
// ***** board-reset *****
_outpw(base+0xC,0x0101);
Sleep(1);
_outpw(base+0xC,0x0008);
```

Write into the Motherboard control register, setting bits "RS" (D0 and D8) to [1] and back to [0].

Set the "Dis" bit in the motherboard control register. This one disables all inputs of the TDC-GPX by hardware.


```

N0 = (N0 & 0xFF)*2;          // # of hits in register 9
                             // *2 as rising and falling edge is selected
printf("N0 %X\tN1 %X\n",N0,N1);

i=0;
while(i<N0) //read data directly from TDC-GPX read register 8
{
    _outpw(base+0x4,0x0008); //Read TDC-GPX IFIFO1
    FIFO0 = _inpd(base+0x0)&0x7FFFFFFF;
    Edge = (FIFO0 & 0x400000)>>22;
    FIFO0 = FIFO0 & 0x3FFFFFFF;
printf("ch1 hit# %d Edge %d \t%5.3fps\n",i+1, Edge,(FIFO0-150)*35.958/1000);
    i++;
}

i=0;
while(i<N1) //read data directly from TDC-GPX read register 9
{
    _outpw(base+0x4,0x0009); //Read TDC-GPX IFIFO2
    FIFO1 = _inpd(base+0x0)&0x7FFFFFFF;
    Edge = (FIFO1 & 0x400000)>>22;
    FIFO1 = FIFO1 & 0x3FFFFFFF;
printf("ch2 hit# %d Edge %d \t%5.3fps\n",i+1, Edge,(FIFO1-260)*35.958/1000);
    i++;
}

    _outpw(base+0xC,0x0000); // enable inputs
    _outpw(base+0x0,0x0000);_outpw(base+0x2,0x4640);//TDC-GPX MasterReset
} while ( !quit );

```

This routine waits until the interrupt flag is set. In the following it checks the number N of hits [in G-Mode the falling edges are counted]. Finally it reads N times directly from the TDC-GPX output registers.

2.3 Burst Mode

In this mode the software writes directly to the TDC-GPX but reads from the motherboard FIFOs. The measurement itself is controlled by the AM-GPX FPGA.

The difference to Direct Read Mode is only in the measuring routine:

```
//TDC-GPX MasterReset
_outpw(base+0x0,0x0000);_outpw(base+0x2,0x4640);

_outpw(base+0xC, 0x0202);      //Burst mode on

do
{
    while(!(_inpw(base+0x8) & 0x0101)); //check motherboard empty flags

    FIFO0 = _inpw(base+0xA);      // read from the first 16 bit FIFO block
    FIFO1 = _inpw(base+0xC);      // read from the second 16 bit FIFO block

    Chan = ((FIFO1 & 0x4000)>>14);
    TimeBins = ((FIFO1 & 0x7F)<<16) + FIFO0;
    Time = float(TimeBins) * 72.62 / 3 / 1000;

    printf("%d  %X  %5.3f\n",Chan,TimeBins,Time);

} while ( !quit );

// ***** End of Your code *****
_outpw(base+0xC, 0x0000);      //Burst mode off
```

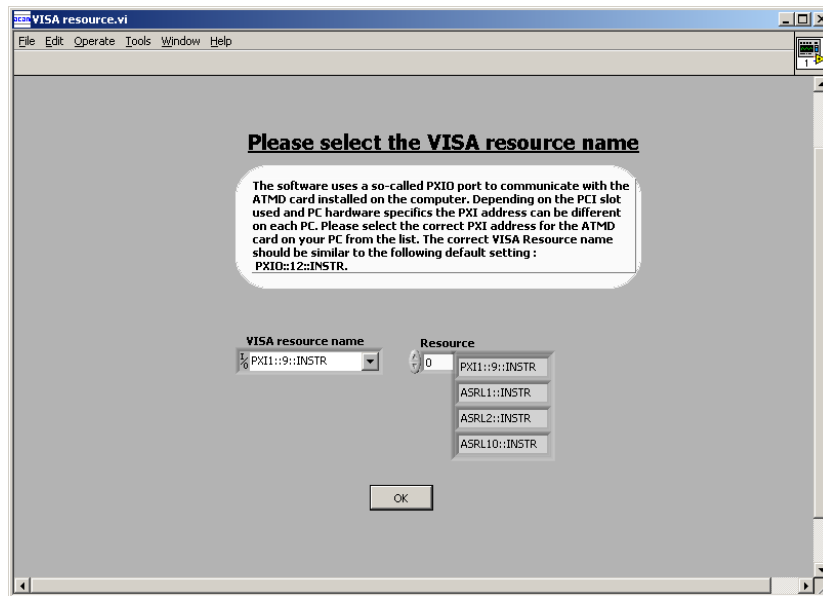
As soon as the Burst mode is switched on it is not possible to communicate directly with the TDC-GPX. Only the motherboard control register MBC is accessible. The data are available from the motherboard FIFO's.

The TDC-GPX read address [8 or 9 for the interface FIFOs] is coded in FIFO1, bit 14. [0] stands for TDC-GPX register 8, [1] for register 9.

3 ATMD_GPX Measurement Software

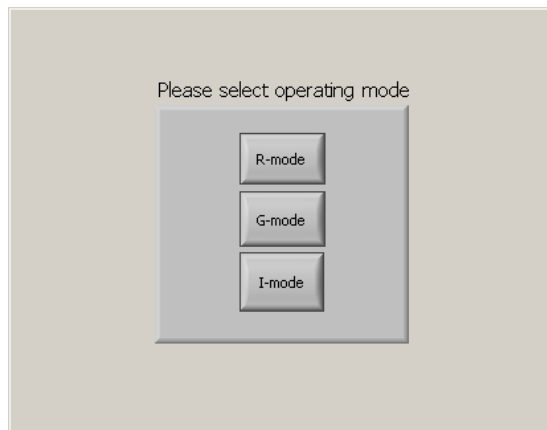
3.1 Measurement Software

1. When starting the ATMD software the user is first asked to select the right PCI interface card for communication:



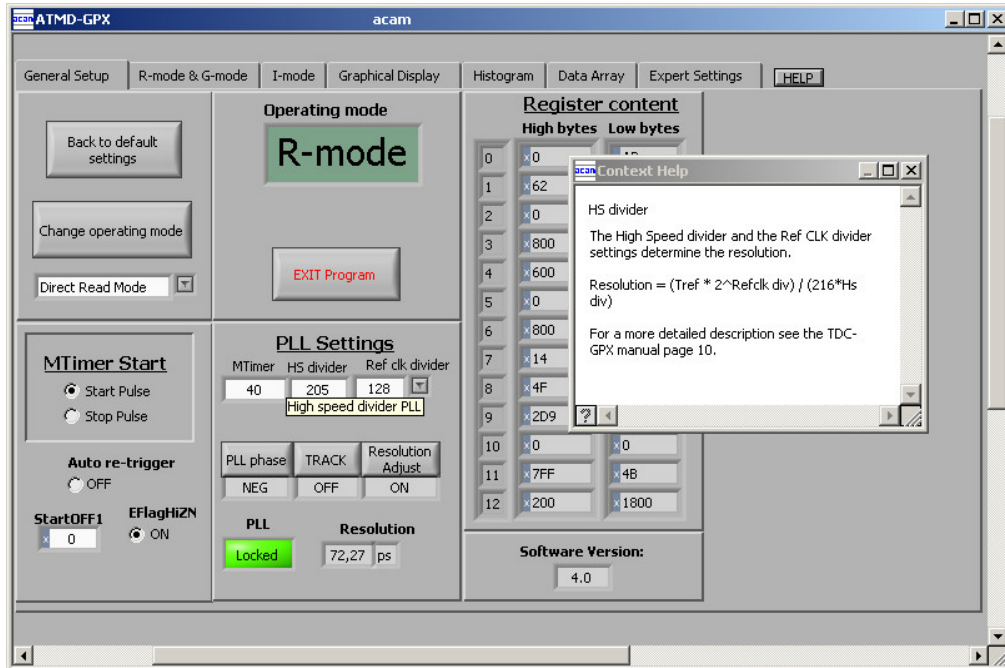
Please select a PXI... device and press ok. Now the main software page is shown.

2. Next you are asked to select the operating mode:



The mode can of course be changed later also. M-Mode is a subroutine of R-Mode.

3. The first page of the ATMD-GPX software shows general setup items.



When you move the mouse over a button, a short description of the button will be displayed. For further information the user can activate additional information by pressing the HELP button in the upper right corner. A small window with more information will be displayed.

4. The first selection should be between "Burst Mode" and "Direct Read Mode". A change will set back all other items to the default settings.

"Direct Read Mode": The software communicates directly with the TDC-GPX.

"Burst Mode": An FPGA controls the measurement. The software looks for data in the motherboard FIFOs only. This speeds up the measurement rate drastically.

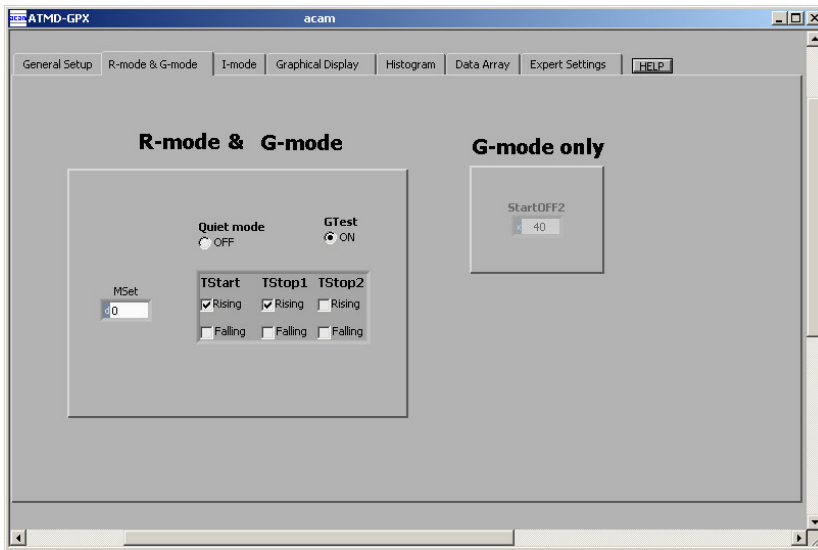
5. The second selection should be about "Auto re-trigger".

- on: the StartRetrig Bit of the TDC-GPX is set. The Start input can be retriggered. All timings refer to the last Start. This option works only in combination with StartTimer = 1 (see I-Mode page). With "Auto re-trigger" the external pulse generator need not be synchronized with the ATMD. It is recommended to use this option.

- off: The TDC-GPX should get only one start pulse. In the ATMD-GPX software the TDC-GPX interrupt is created by the "Mtimer". On this page the user selects the way the "Mtimer" is started as well as the time interval in multiples of 25ns. In this example "Mtimer" is triggered with a START pluse and runs for $40 * 25ns = 1\mu s$. The values for HS Divider and Ref clk divider set the resolution which is displayed. PLL phase is "NEG" with the regulator circuit used on the board. This option asks for a synchronization between ATMD and external pulse generator. Therefore the AM-GPX module has a connector to send a trigger pulse to an external device (Jxx, control by MBC register Bit "Trig").

6. Setting the resolution: The resolution can be changed in a limited range, typically between 71 to 90 ps, depending on the TDC-GPX chip. The displayed resolution always refers to the I-Mode bin size. In R-Mode the Bin size is the displayed value divided by 3 (In the figure shown above the Bin size would be $72.27/3=24.09$ ps. "Ref-Clk-divider" should be 128, "HS divider" should be in the range of 180 to 205.

7. R- and G-Mode page



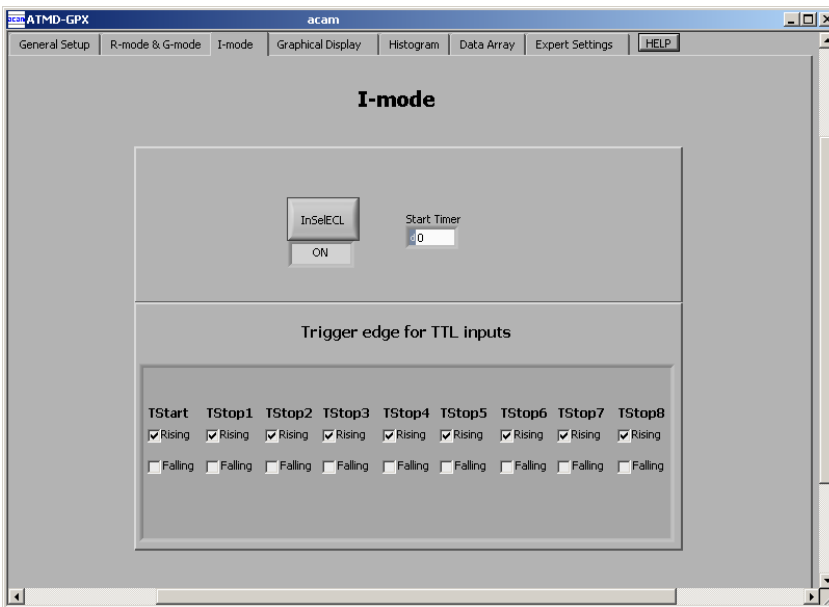
On this page the user sets the sensitivity of the inputs to a) rising or falling edge in R-Mode b) rising and/or falling edge in G-Mode.

With "Quiet mode selected" the ALU starts data processing not before the interrupt flag has come.

With "Gtest" selected the LVTTTL inputs are used instead of the LVPECL inputs.

Setting MSet > 1 activates the M-Mode. This works only in combination with Quiet mode.

8. I-Mode page

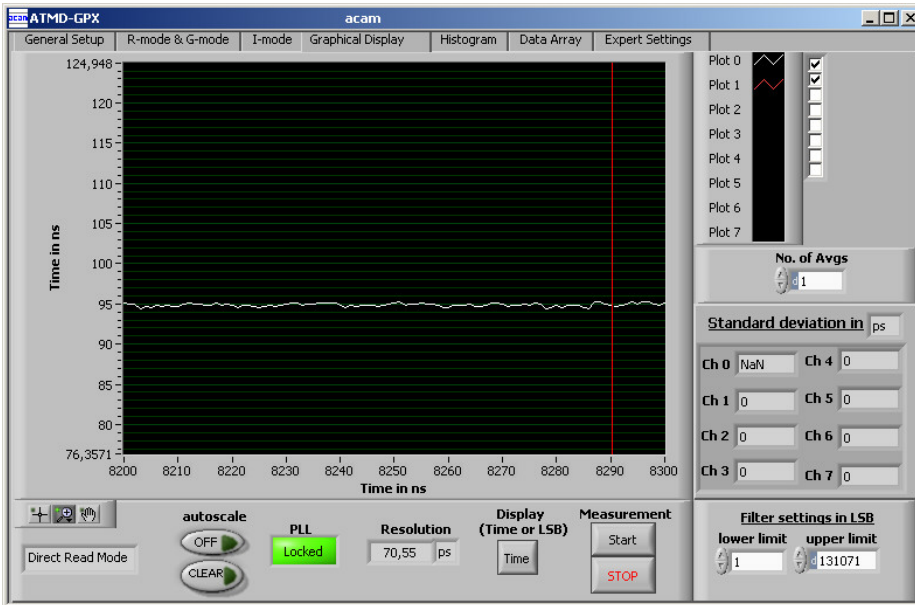


On this page the user sets the sensitivity of the inputs to rising or falling edge in I-Mode.

With "InSelECL" selected the LVPECL inputs are used instead of the LVTTTL inputs. DSTOP1 is switched to Tstop1, Tstop3, Tstop5, Tstop7, DSTOP2 is switched to Tstop2, Tstop4, Tstop6, Tstop8.

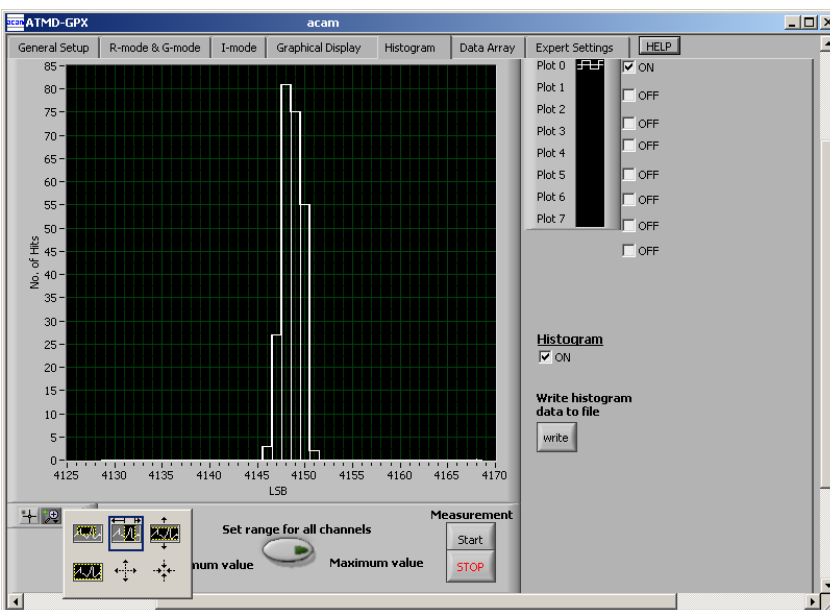
Start Timer defines the period between two internally generated start pulse. "0" switches off the internal start pulse generation. "1" is necessary for the external start retrigger. Higher values set the internal start retrigger.

9. Graphical Display page:



This page is for the graphical display, showing the measurement results (y) over runtime (x). The scales can be modified directly by editing the corner values or by using the magnifying glass tool. The filter is a software filter. It is useful in applications where the pulse generator is not synchronized with the software. "No. of Avgs" activates software averaging. The standard deviation always refers to the single shot measurement.

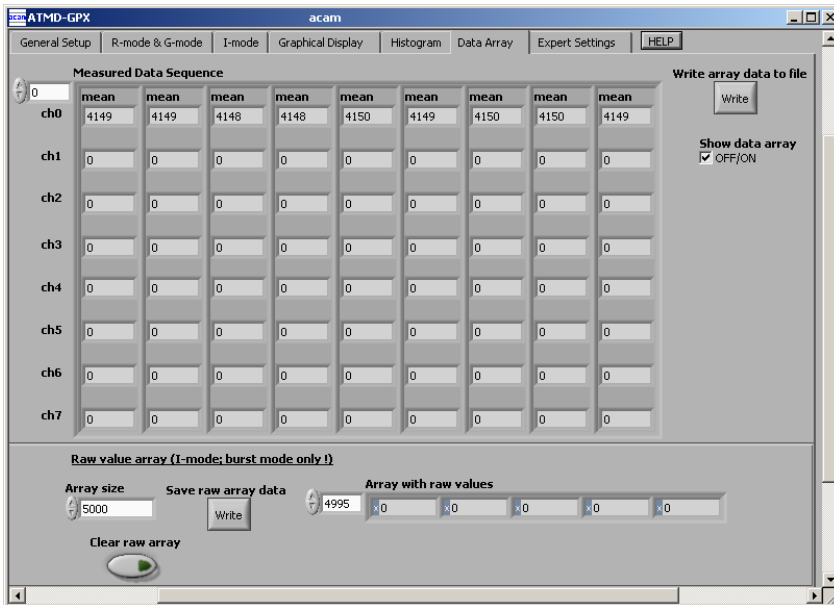
10. Histogram page



This page shows the measurement data as a histogram (hits per time slot). For speeding up the measurement the histogram is by default be switched off.

When starting the histogram press "Set range for all channels" button and then select "full display" item from the loop (lower left). For a full resolution histogram select LSB display on the graphical display page. Otherwise the resolution of the histogram display is limited to 1ns. There is also a possibility to export the histogram data.

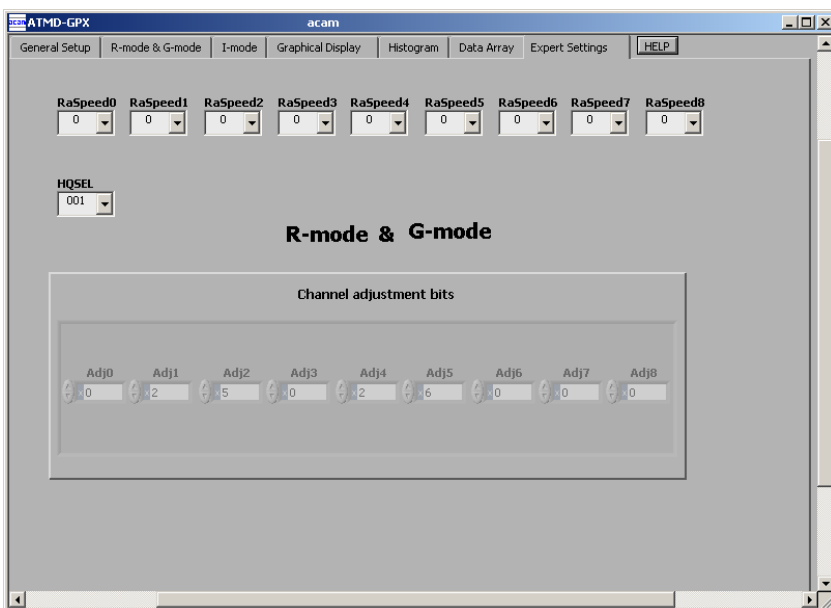
11. Data array page



The software collects the latest 1024 data that are displayed. They can be exported into a file. In case there are more than one active stop channels, only one channel has a new value, the other channels keep the latest value. This is necessary to have a comfortable display.

To overcome this data manipulation there is a possibility to write the pure TDC raw data into a file. The size of the raw data array can be selected.

12. Expert settings page

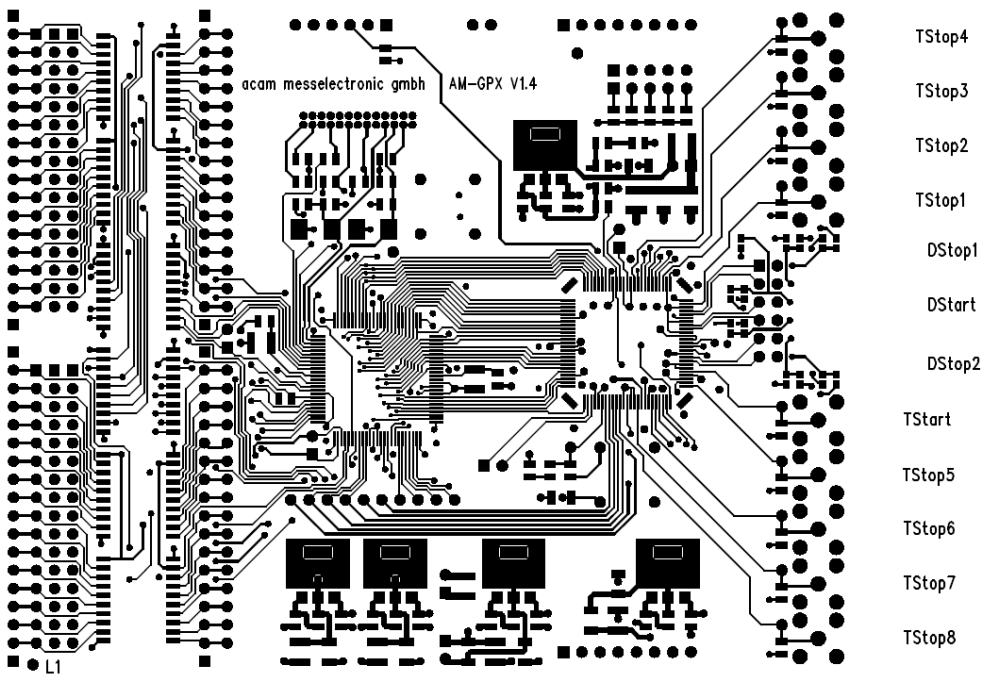
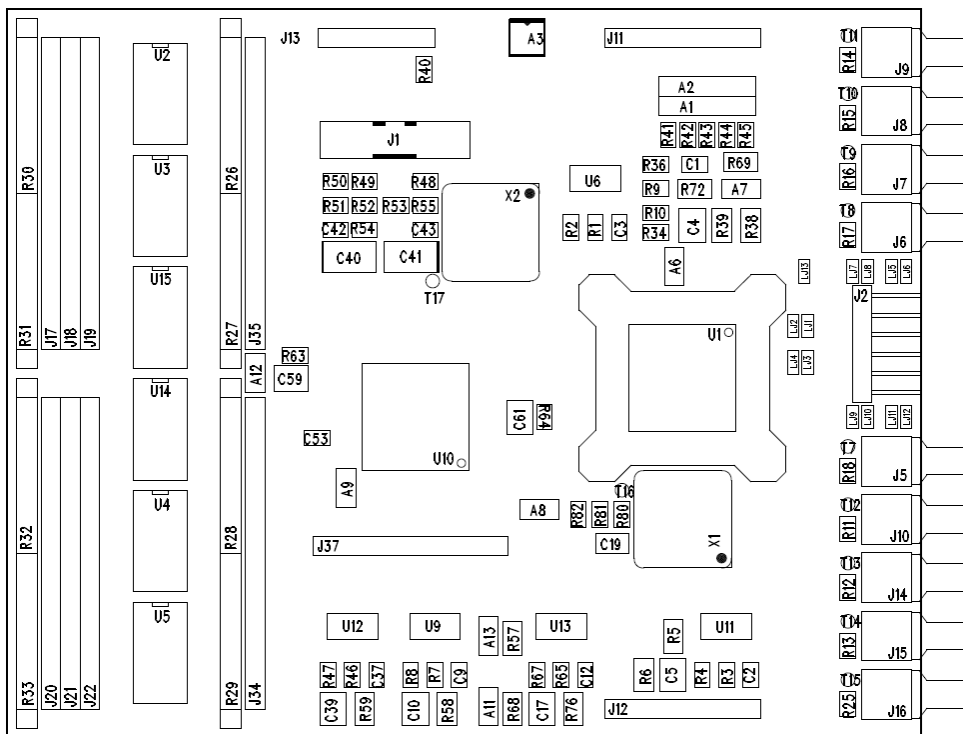


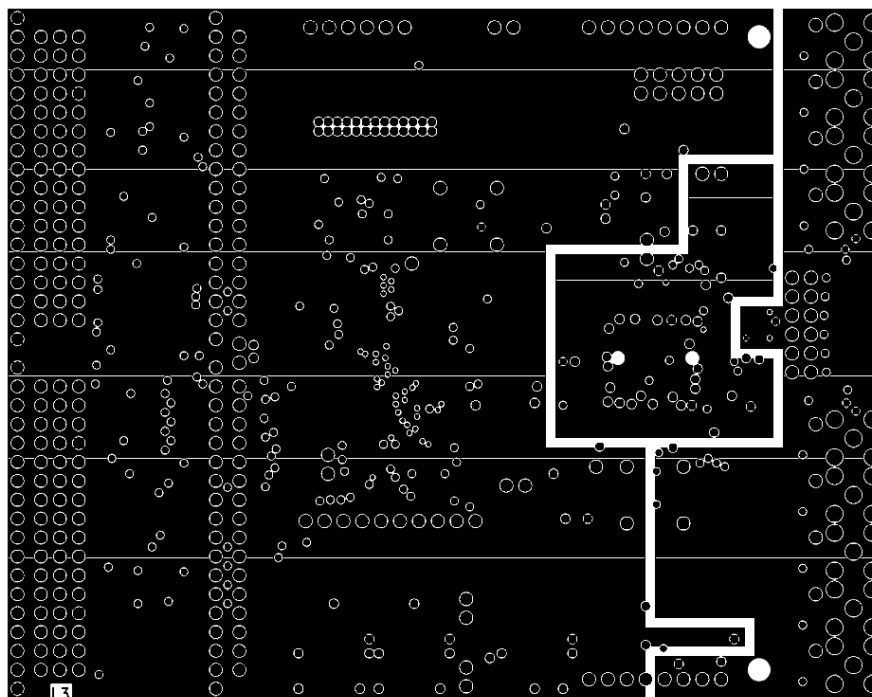
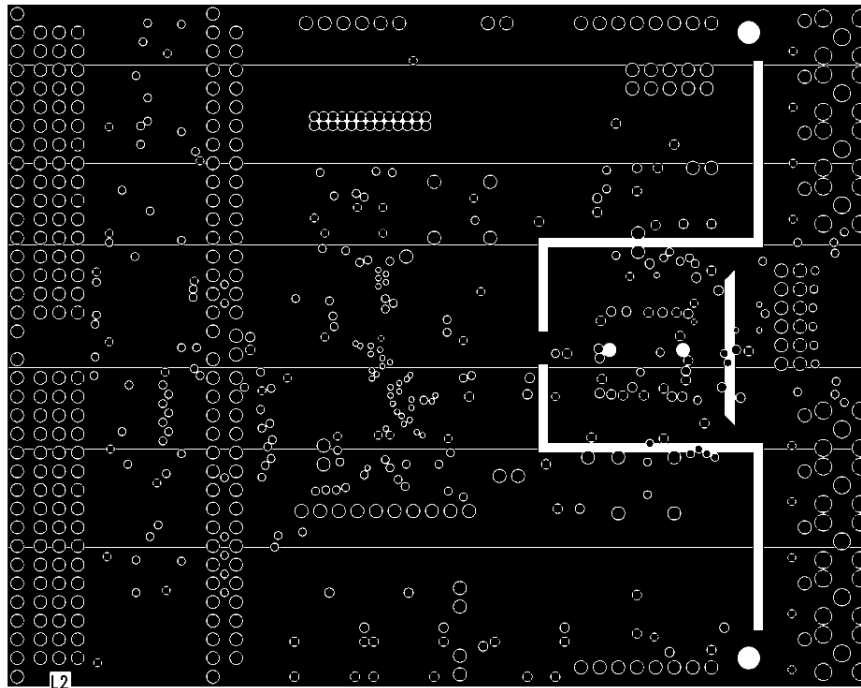
This page is used in R- and G-Mode to set the adjustment bits for best standard deviation. We recommend to use the default values.

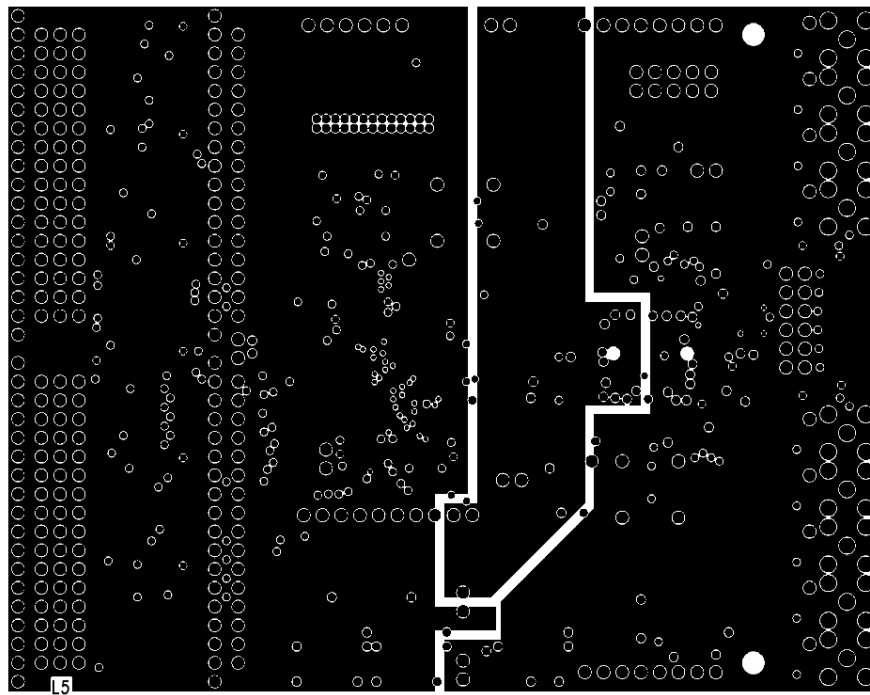
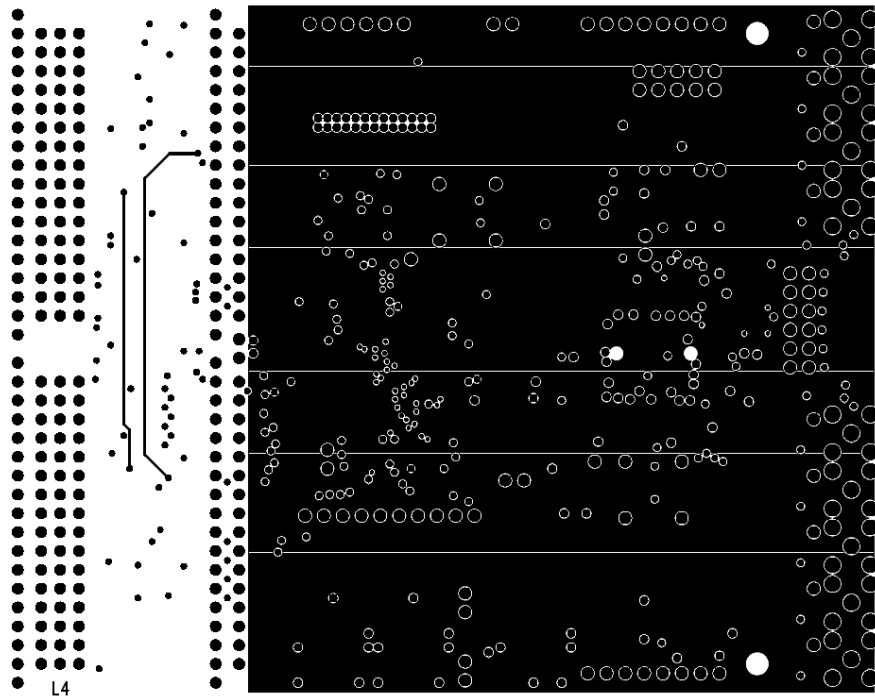
4 AM-GPX module

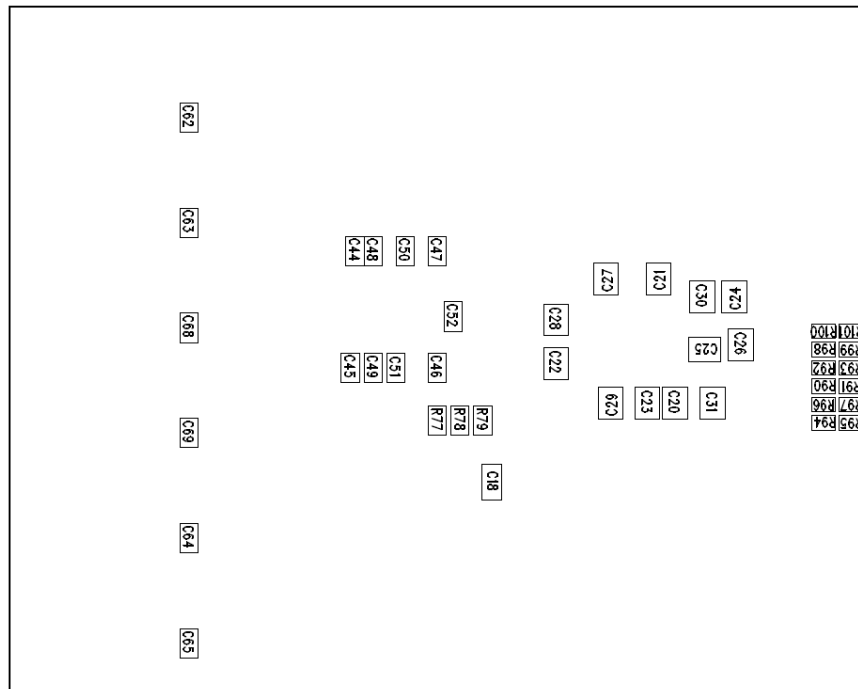
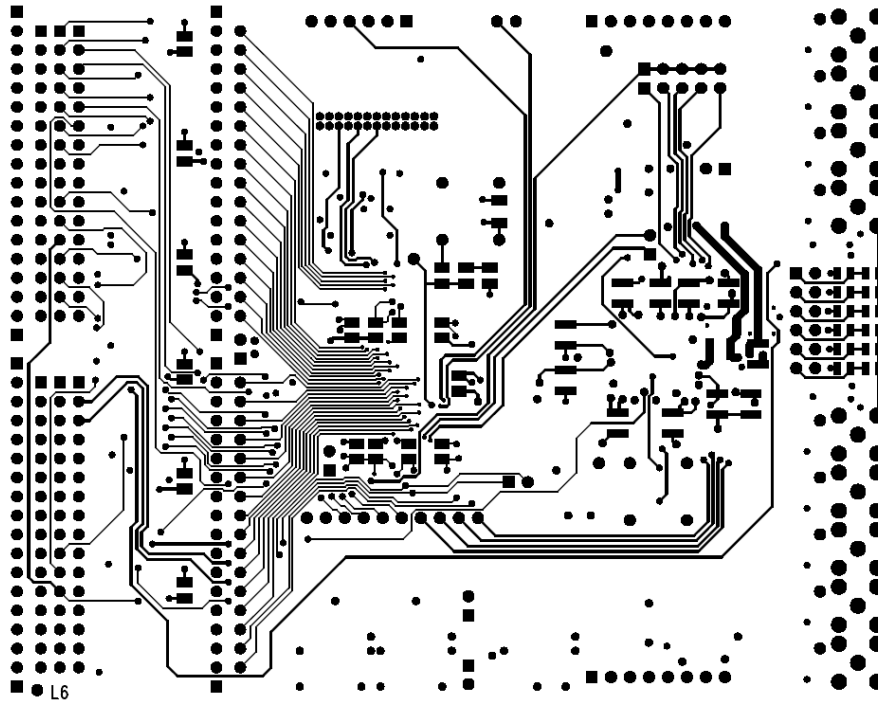
4.1 AM-GPX Schematics

4.2 AM-GPX Board Layout





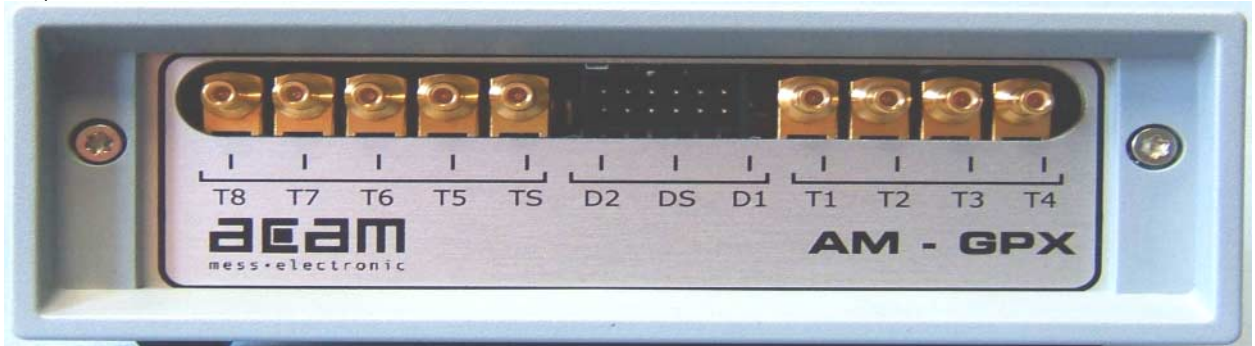




4.2 Input section

The ATMD-GPX offers 9 Low-voltage TTL inputs and 3 differential Low-voltage PECL inputs.

Front panel:

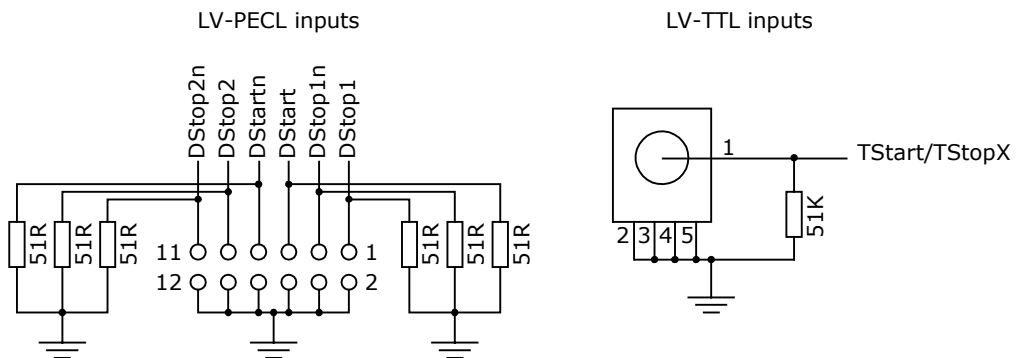


The order of the pins is according to the pinout of the TDC-GPX. This avoids wire crossing on the PCB and the related disturbances.

The connectors are:

- Jack:
- LV-TTL: SMB
- LV-PECL: Molex

Input circuits:



Last Changes:

First edition: 28.7.2004

01.Sep.2004: Section 4

16 Mar 2005: Update to final TDC-GPX version

18 May 2005: Update version 4.0

Contact

Headquarter Germany:	acam-messelectronic gmbh	Am Hasenbiel 27 D - 76297 Stutensee-Blankenloch	Tel: +49-7244-7419-0 Fax: +49-7244-7419-29 email: support@acam.de www.acam.de
Distributors :			
France	microel (CATS S.A.)	Immeuble "Oslo" - Les Fjords 19, avenue de Norvège Z.A. de Courtaboeuf - BP 3 91941 LES ULIS Cedex	Tél. : +33 1 69 07 08 24 Fax : +33 1 69 07 17 23 commercial@microel.fr www.microel.fr
Great Britain	2001 Electronic Components Ltd.	Stevenage Business Park, Pin Green Stevenage, Herts SG1 4S2	Tel. +44 1438 74 2001 Fax +44 1438 74 2001 a.parker@2k1.co.uk www.2k1.co.uk
India	Brilliant Electro-Sys. Pvt. Ltd.	4, Chiplunker Building, 4 Tara Temple Lane, Lamington Road, Bombay – 400 007	Tel: +91 22 2387 5565 Fax: +91 22 2388 7063 www.brilliantelectronics.com besimpex@vsnl.net
Israel	ArazimLtd.	4 Hamelacha St. Lod P.O.Box 4011 Lod 71110	Tel: 972-8-9230555 Fax: 972-8-9230044 email: info@arazim.com www.arazim.co.il
Japan	DMD–Daiei Musen Denki Co., Ltd.	10-10, Sotokanda, 3-Chome, Chiyoda-Ku Tokyo 101-0021	Tel: +81 (0)3 3255 0931 Fax: +81 (0)3 3255 9869 www.daiei-dmd.co.jp sales@daiei-dmd.co.jp
P.R. China	Broadtechs Technology Co. Ltd.	Shanghai Office: 3C JinHuan Building, 489 Xiang Yang Road South Shanghai, 200031	Tel.: +86-21-54654391 Fax: +86-21-64454370 http://www.acam-china.com/ Email: info@acam-china.com
South Korea	SamHwa Technology Co., Ltd.	#4 4F Kyungwon building, 416-6 Jakjeon-dong GYEYANG-GU, INCHEON 407-060	Tel: +82 32 556 5410 Fax: +82 32 556 5411 www.isamhwa.com minjoonho@isamhwa.com
Switzerland	Computer Controls AG	Neunbrunnenstr. 55 8050 Zürich	Tel.: +41-1-308 6666 Fax: +41-1-308 6655 email: roeschger@ccontrols.ch www.ccontrols.ch
United States of America	Transducers Direct, LCC	264 Center Street Miamiville, Ohio 45147	Tel: 513-583-9491 Fax: 513-583-9476 email: sales@acam-usa.com www.acam-usa.com
Russia	Galant Electronics, Ltd.	100, Prospekt Mira, Moscow, 129626, Russia	Tel/Fax: +7-495-987-42-10, Tel: +7-095-107-19-62 Mobile +7-916-993-67-57 Email: leonid-k@galant-e.ru www.galant-e.ru

The information provided herein is believed to be reliable; however, acam assumes no responsibility for inaccuracies or omissions. Acam assumes no responsibility for the use of this information, and all use of such information shall be entirely at the user's own risk. Prices and specifications are subject to change without notice. No patent rights or licenses to any of the circuits described herein are implied or granted to any third party. acam does not authorize or warrant any acam product for use in life support devices and/or systems.